



# March House

Your personal custom construction engineer.





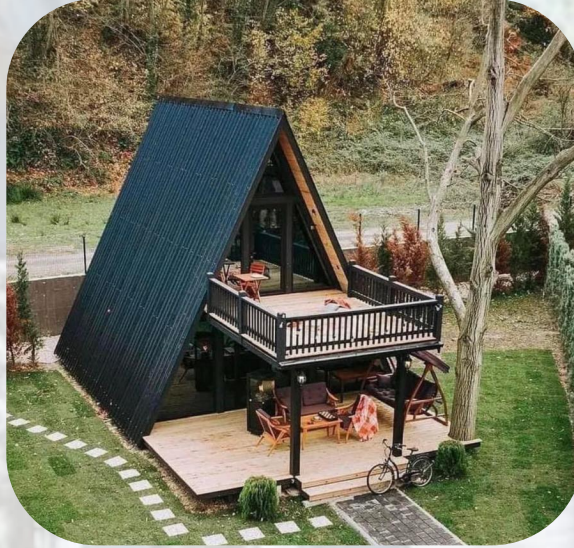
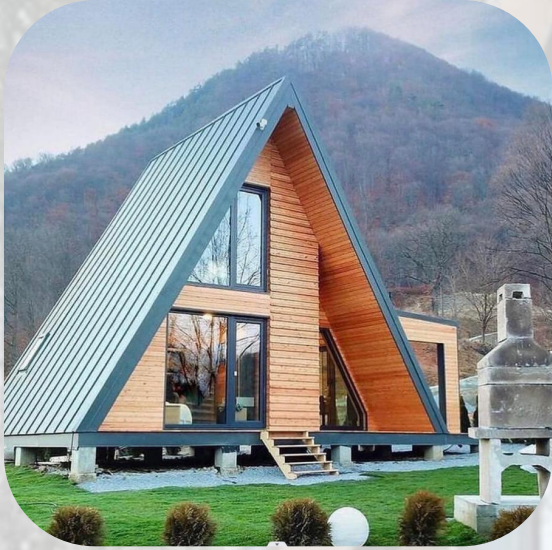


## Triangle wooden product



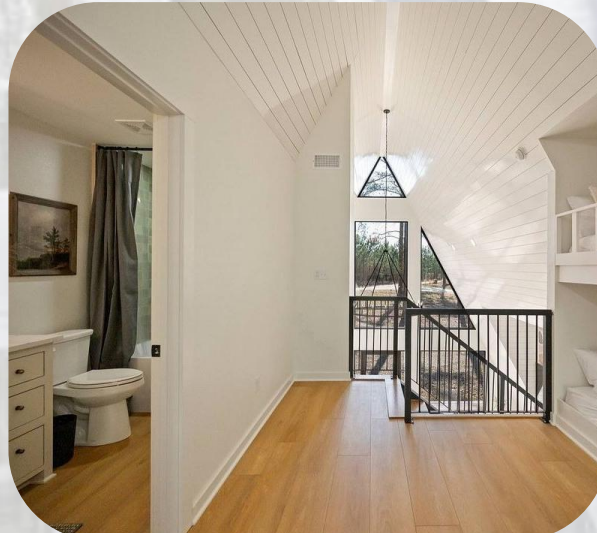
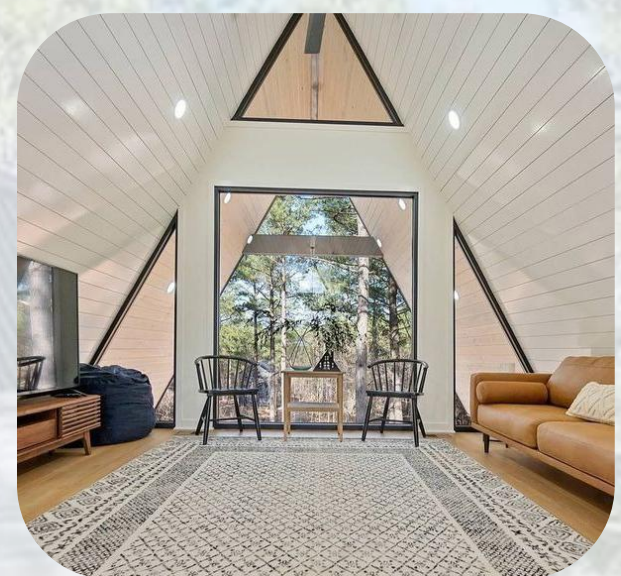


# Exterior design





# Inside finish





# Triangle house style 01







first floor interior effect



first floor interior effect



second floor interior



second floor interior

**Optional structure:** light steel structure

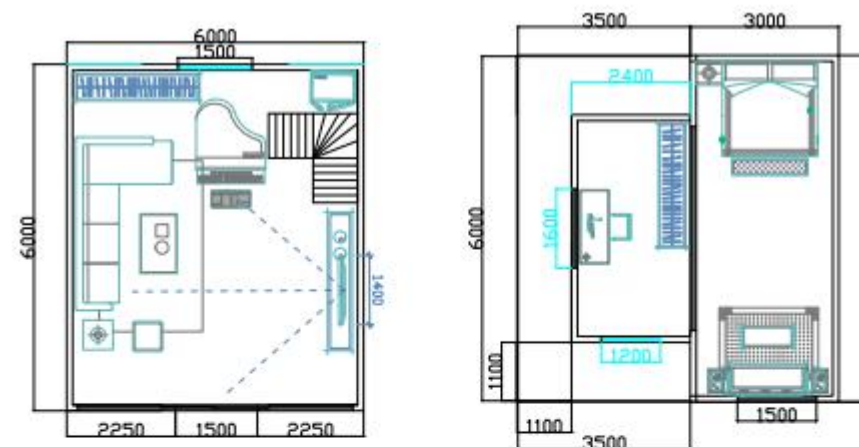
**Optional tiles:** asphalt tiles, fiberglass, aluminum-plastic panels or high-grade alloy tiles

**The main decoration material :** bamboo wood fiber, aluminum plate, wood veneer or solid wood gusset plate Use

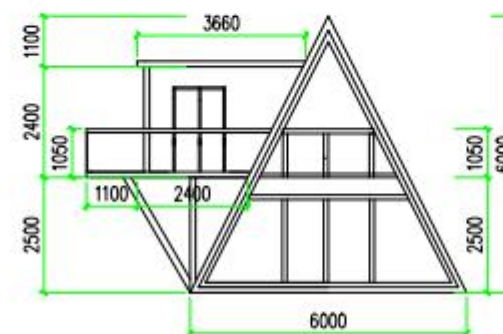
**nature:** can be used for accommodation, office

**Product model:** XZYSJ-01

**House area:** 84 square meters



layout plan



elevation plan



## Triangle house style 02





**Optional structure:** light steel structure

**Optional tiles:** asphalt tiles, fiberglass, aluminum-plastic panels or high-grade alloy tiles

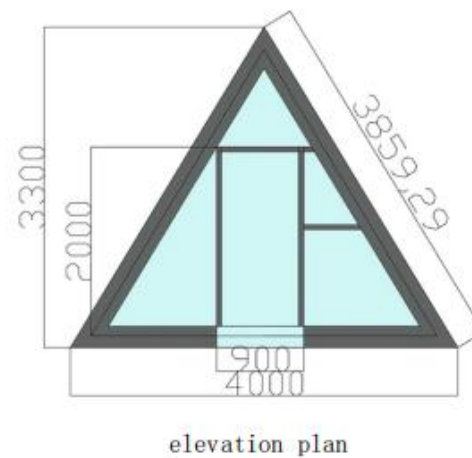
**The main decoration material :** bamboo wood fiber, aluminum plate, wood veneer or solid wood gusset plate Use

**nature:** can be used for accommodation, office

**Product model:** XZYSJ-02

**House area:** 32.4 square meters

**Platform area:** 7 square meters





for different







color 01



color 02







color 03



color 04

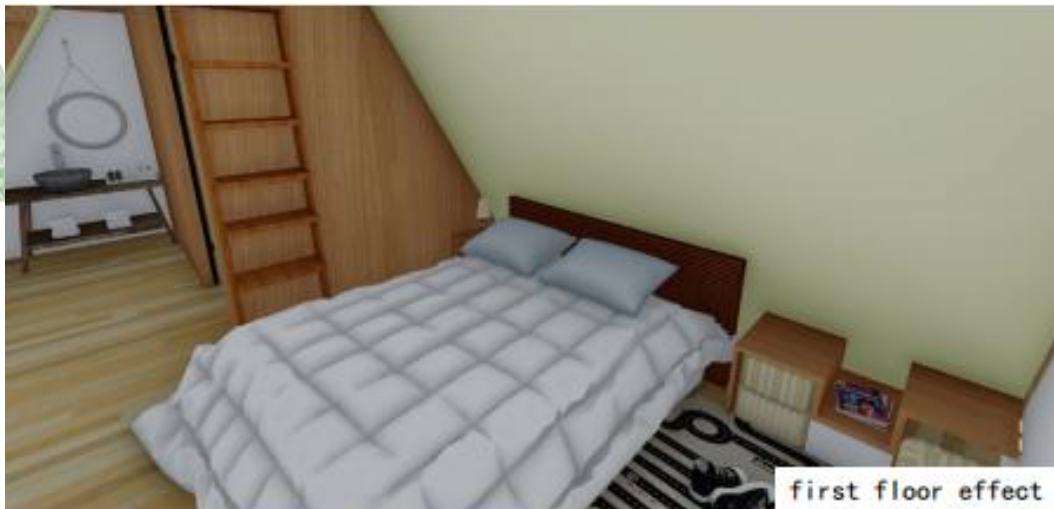




for different outside







first floor effect



first floor effect



second floor effect



second floor effect





## Triangle house style 03









**Optional structure:** light steel structure

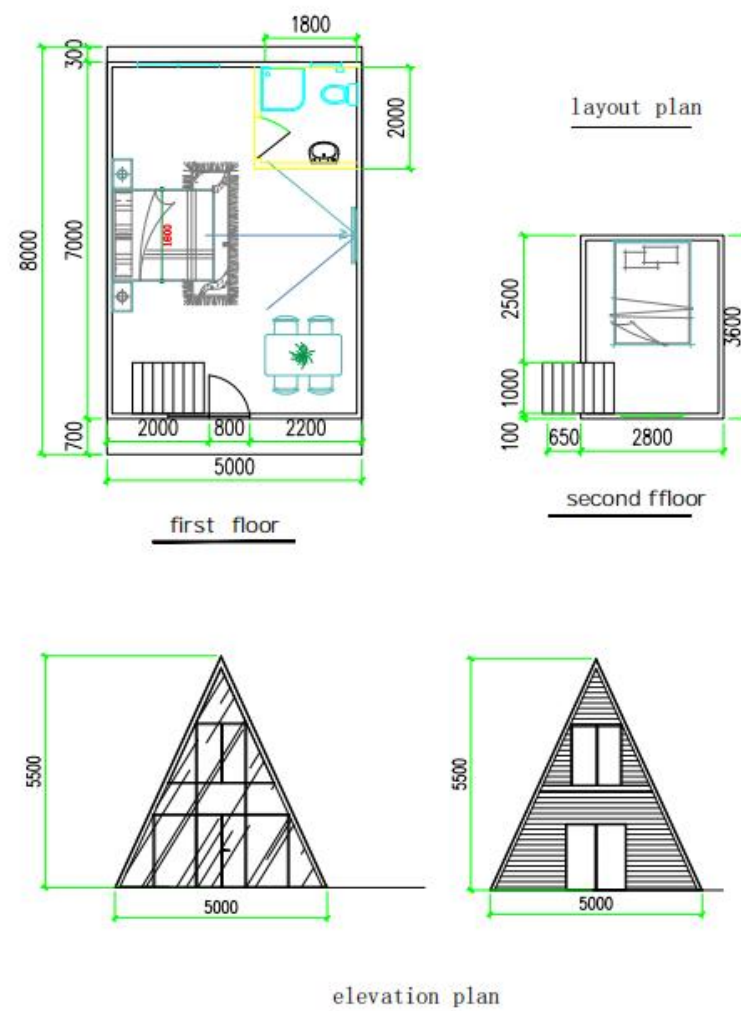
**Optional tiles:** asphalt tiles, fiberglass, aluminum-plastic panels or high-grade alloy tiles

**The main decoration material :** bamboo wood fiber, aluminum plate, wood veneer or solid wood gusset plate Use

**nature:** can be used for accommodation, office

**Product model:** XZYSJ-03

**House area:** 51.6 square meters

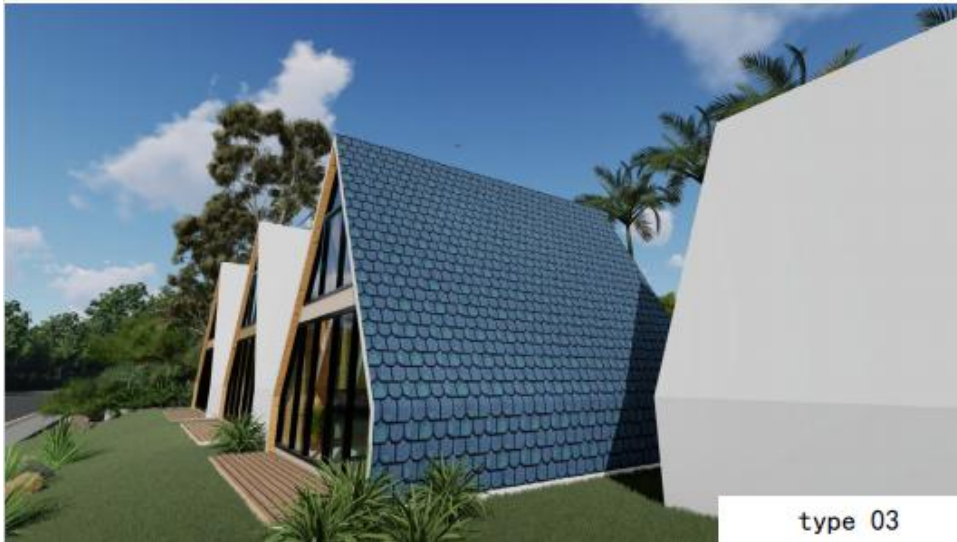




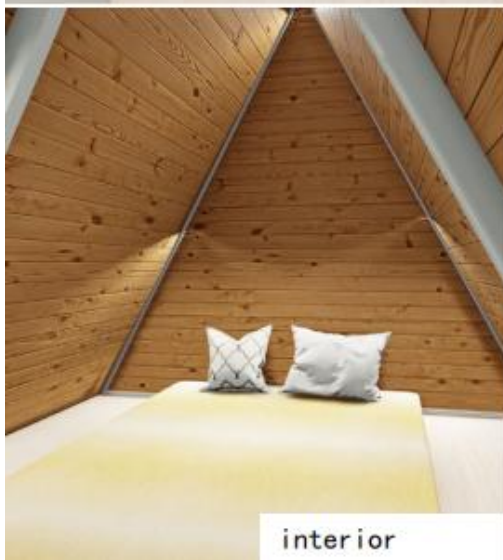
# Triangle house style 04













**Optional structure:** light steel structure

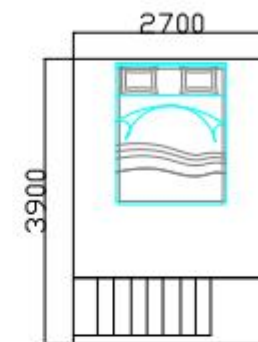
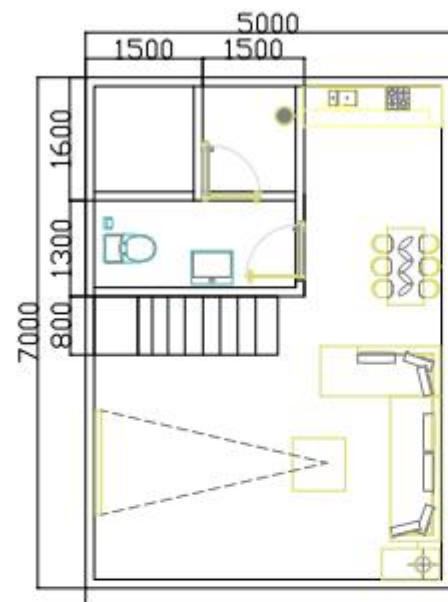
**Optional tiles:** asphalt tiles, fiberglass, aluminum-plastic panels or high-grade alloy tiles

**The main decoration material :** bamboo wood fiber, aluminum plate, wood veneer or solid wood gusset plate Use

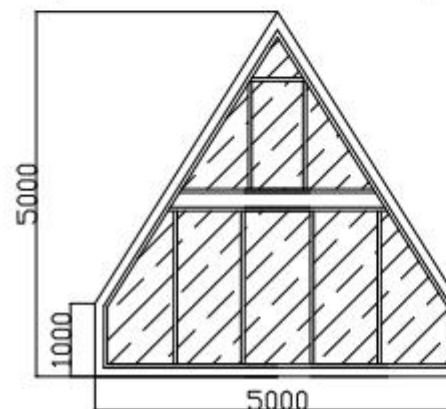
**nature:** can be used for accommodation, office

**Product model:** XZYSJ-04

**House area:** 51.7 square meters



layout plan



elevation plan



# Triangle house style 05







interior



outside



interior



interior



**Optional structure:** light steel structure

**Optional tiles:** asphalt tiles, fiberglass, aluminum-plastic panels or high-grade alloy tiles

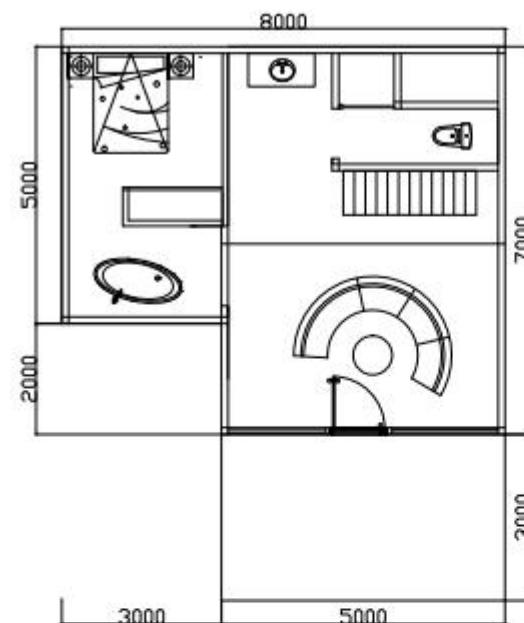
**The main decoration material :** bamboo wood fiber, aluminum plate, wood veneer or solid wood gusset plate Use

**nature:** can be used for accommodation, office

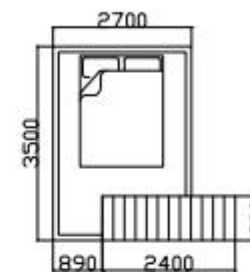
**Product model:** XZYSJ-05

**House area:** 71.8 square meters

**Platform area:** 15 square meters

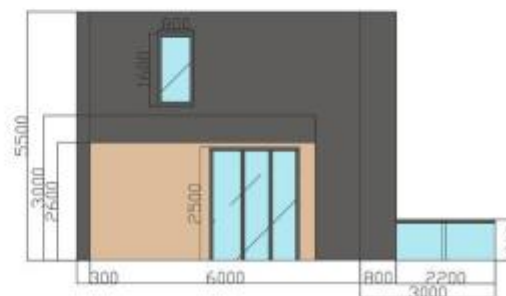
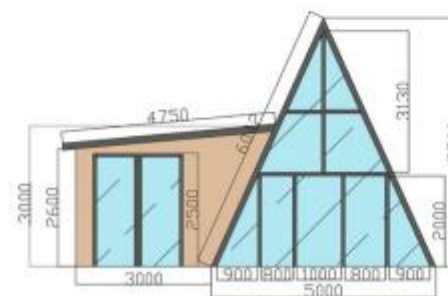


first floor



second floor

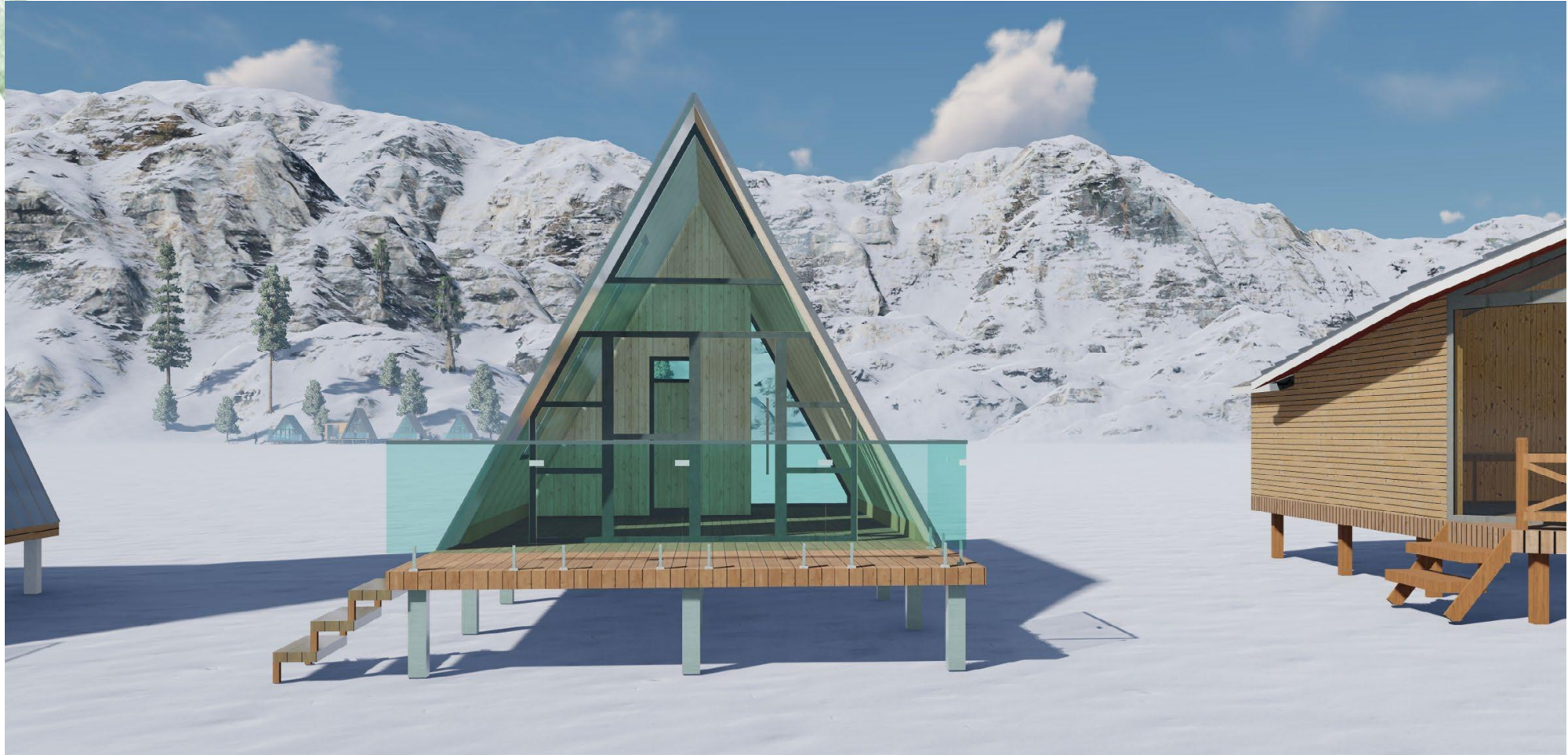
layout plan



elevation plan



## Triangle house style 06





**Optional structure:** light steel structure

**Optional tiles:** asphalt tiles, fiberglass, aluminum-plastic panels or high-grade alloy tiles

**The main decoration material :** bamboo wood fiber, aluminum plate, wood veneer or solid wood gusset plate Use

**nature:** can be used for accommodation, office

**Product model:** XZYSJ-06

**House area:** 40 square meters

**Platform area:** 15 square meters

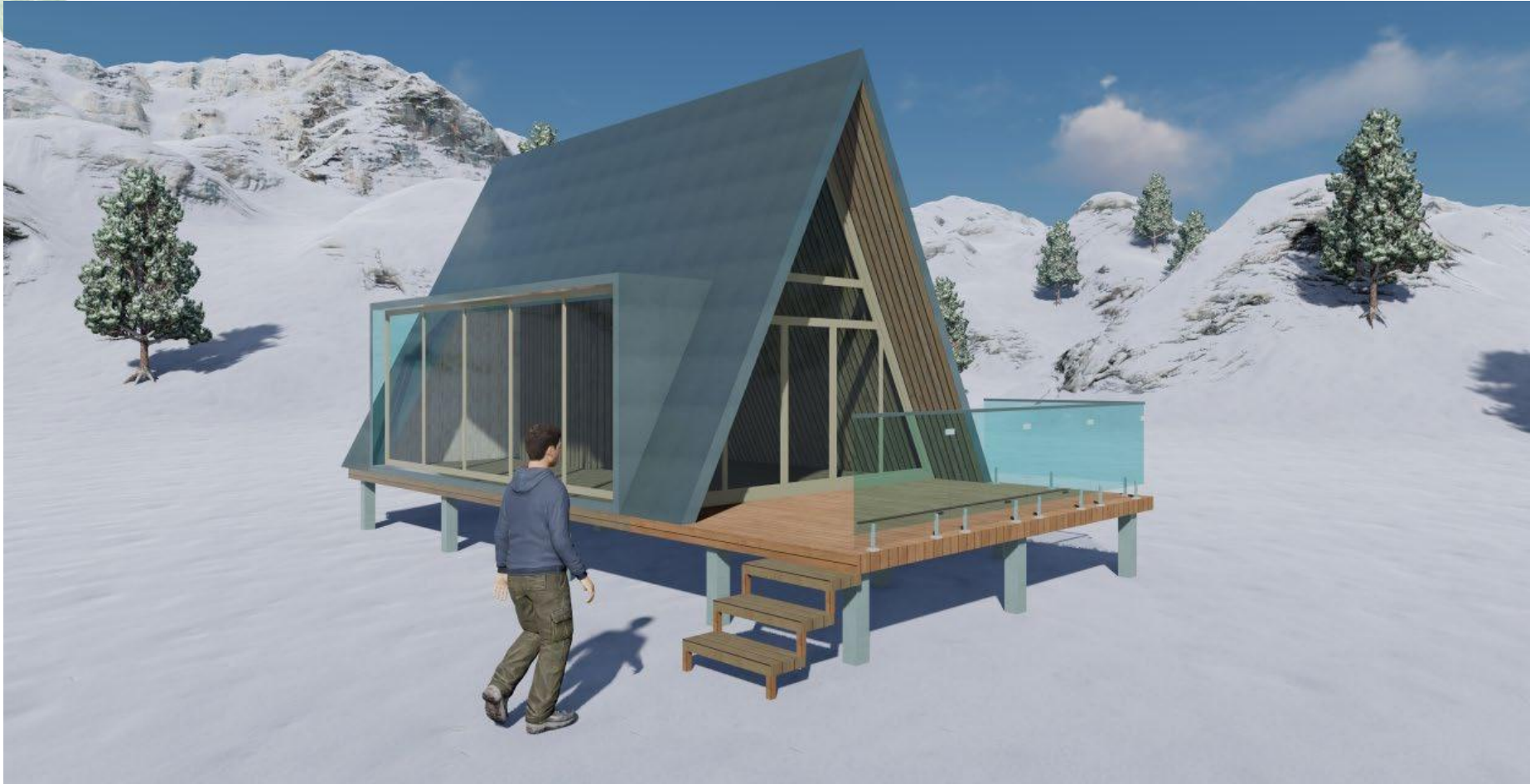


layout plan

elevation plan



# Triangle house style 07





**Optional structure:** light steel structure

**Optional tiles:** asphalt tiles, fiberglass, aluminum-plastic panels or high-grade alloy tiles

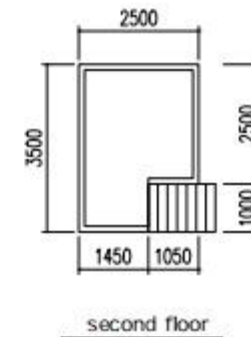
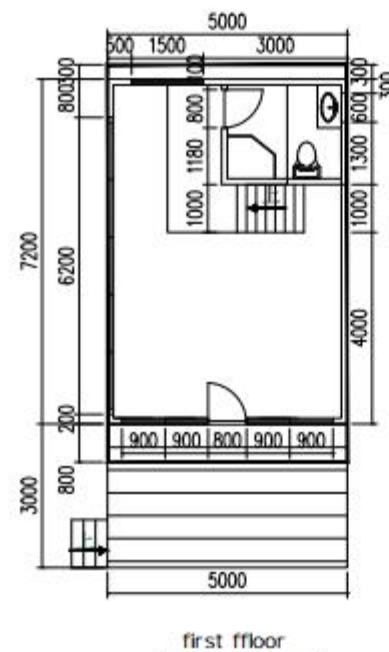
**The main decoration material :** bamboo wood fiber, aluminum plate, wood veneer or solid wood gusset plate Use

**nature:** can be used for accommodation, office

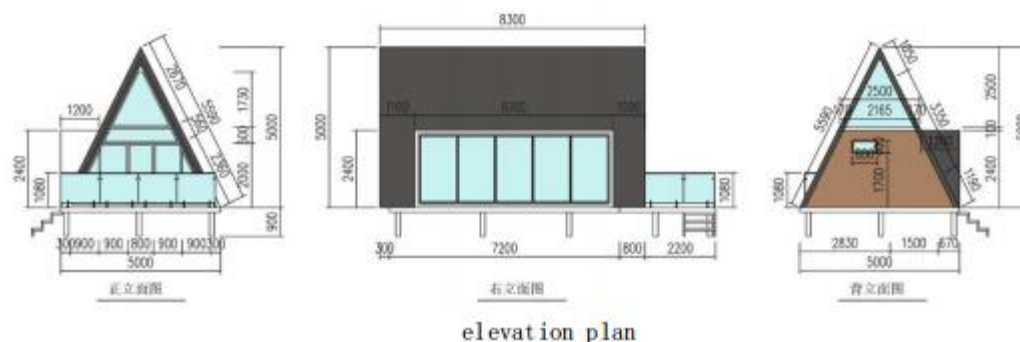
**Product model:** XZYSJ-07

**House area:** 50.6 square meters

**Platform area:** 15 square meters



layout plan



elevation plan



## Triangle house style 08









**Optional structure:** light steel structure

**Optional tiles:** asphalt tiles, fiberglass, aluminum-plastic panels or high-grade alloy tiles

**The main decoration material :** bamboo wood fiber, aluminum plate, wood veneer or solid wood gusset plate Use

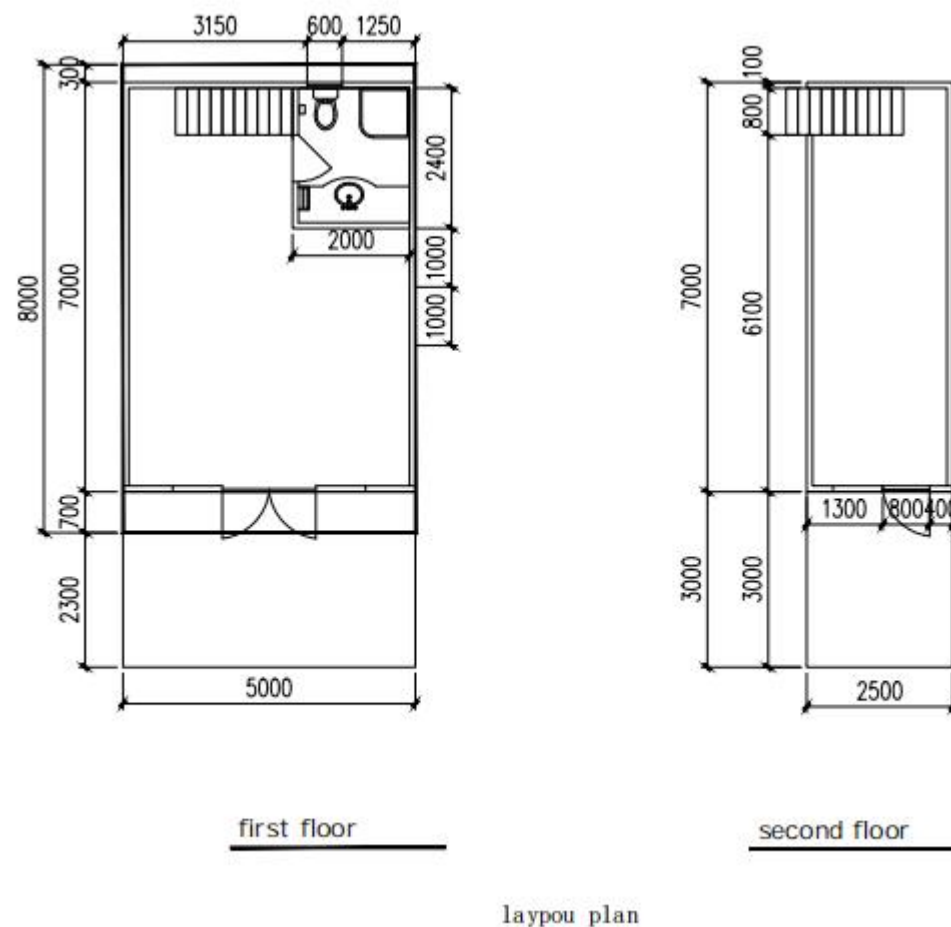
**nature:** can be used for accommodation, office

**Product model:** XZYSJ-08

**House area:** 57.8 square meters

**Terrace area on the first floor:** 15 square meters

**Second Floor Terrace Area:** 7.5 sqm





# Triangle house style 09







exterior



interior



interior



interior



**Optional structure:** light steel structure

**Optional tiles:** asphalt tiles, fiberglass, aluminum-plastic panels or high-grade alloy tiles

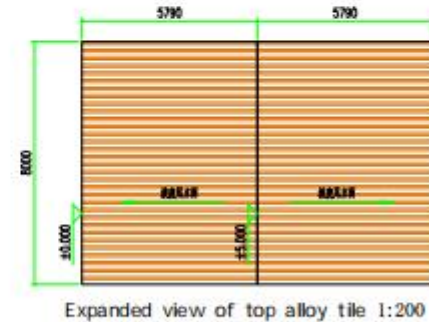
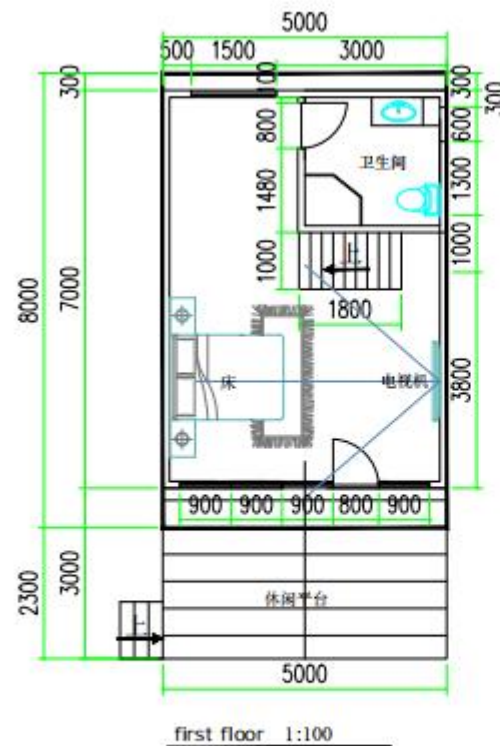
**The main decoration material :** bamboo wood fiber, aluminum plate, wood veneer or solid wood gusset plate Use

**nature:** can be used for accommodation, office

**Product model:** XZYSJ-09

**House area:** 48.75 square meters

**Platform area:** 15 square meters



layout plan



# 孙沛霖 Alan

## *Project Manager*

齐派房屋（青岛）有限公司

MARCH HOUSE (QINGDAO) CO., LTD



☎ 0086 190 5026 1618

☎ 0086 190 5026 1618

✉ alan@marchbuilding.com

🌐 www.marchbuilding.com